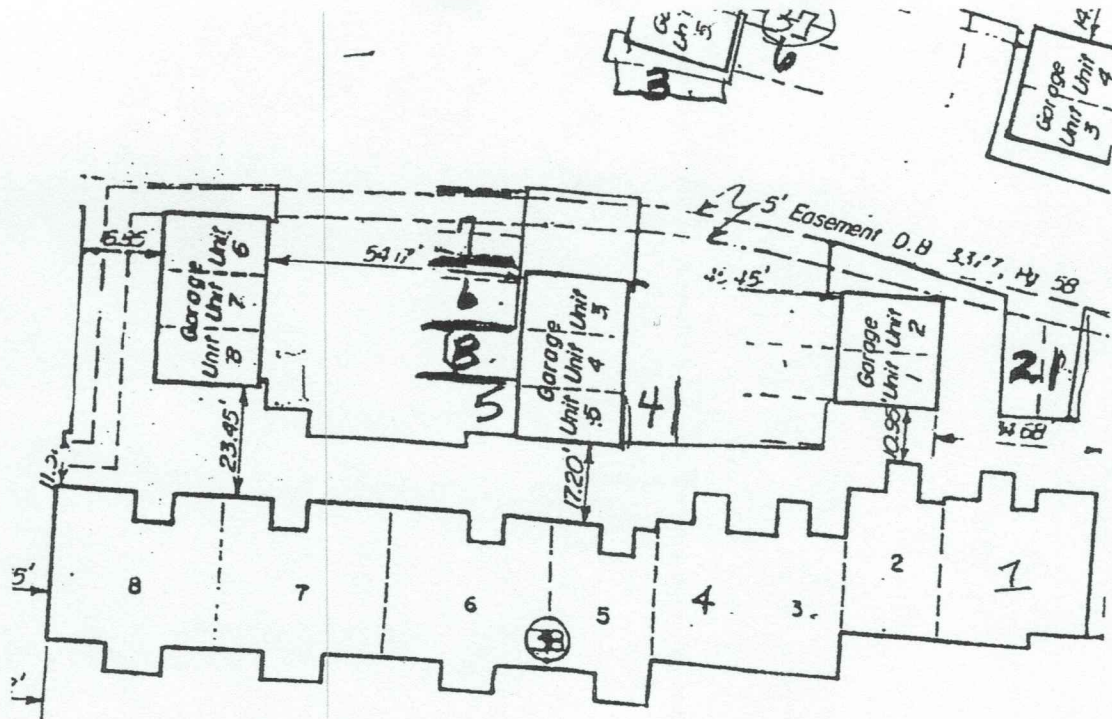


ST 38



SURVEYED & PLATTED
BY

EVANS, MECHWART, HAMBLETON & TILTON, INC.
CONSULTING ENGINEERS AND SURVEYORS
GAHANNA, OHIO

I hereby certify that the foregoing plat was prepared from an actual survey of the premises and shows the location of the boundaries and improvements as constructed and that there are no encroachments either way across the boundaries unless or except as shown hereon.

By Thomas D. Sibbalds
Registered Surveyor No. 5908

SCALE: 1" = 40'

NOVEMBER, 1976

