

CE
CE

205.60
S 89°00'00" W
1/5 Elevation DB 3377, Pg 59

$\Delta = 24^{\circ}17'38''$ $R = 250.11'$
Ch Brq = N 85°51'14" E
Ch = 92.63'

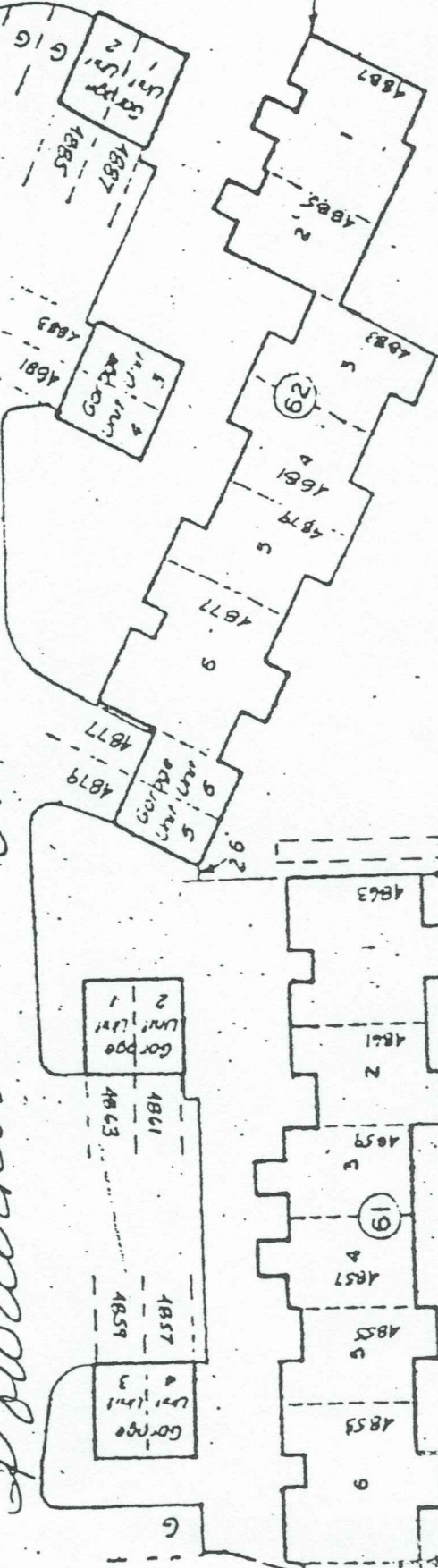
Ch = 483.25'
N 73°42'27" E
19.02

ROAD

Ch Brq = N 85°31'24" E

ee P.B. 48, Pg. 261

Powderhorn Lane



1/5 Elevation DB 3377, Pg 58

685.00

511